



Trend II CPAP and APAP

Quick Setup Guide

System Requirements

Hardware Requirements

- AMD Athlon/Pentium Class (x86), Operating Frequency 700 MHz
- min. 192 MB RAM for MS Windows® 98, NT4.0, ME
- min. 400 MB RAM for MS Windows® 2000, XP, Server 2003, Vista
- min. 150 MB free hard disc space (depending on the desired storage volume for patient data)
- min. 280 MB free hard disc space for the Microsoft .NET Framework 2.0 Re-distributable (x86)
- 2 MB Graphics card with at least High Color (16 Bit)
- Mouse
- One available COM-interface for each device
- One available SD-interface (only when using the DATA box)

Software Requirements

- Operating system:
 - MS-Windows® 98
 - MS-Windows® NT 4.0, Service Pack 6a
 - MS-Windows® ME
 - MS-Windows® 2000
 - MS-Windows® XP
 - MS-Windows® Server 2003
 - MS-Windows® Vista
- Installation of the newest Service Packs and critical updates for the operating system used
- Windows Installer 3.0 (Windows 2000/NT and lower)
- Microsoft .NET 2.0 Frameworks
- Microsoft Internet Explorer 5.01 or later versions
- Other requirements
- A serial cable (connectors: 9pin D-Sub plug and RJ11 plug)

Installing Software

The software is available from <http://www.ukcpap.co.uk/downloads.php>. Click on TRENDset Ver. 1.1.15 english (38 MB) and run. Alternatively, copy the line below and paste into your address bar.

http://www.ukcpap.co.uk/downloads/TRENDset_install_1.1.15_english.exe

If the .NET-Framework is not installed on your computer, you will be asked to install the .NET-Framework. The software is available from <http://www.ukcpap.co.uk/downloads.php>. Click on .net Framework 2.0 (23 MB) and run. Alternatively, copy the line below and paste into your address bar.

http://www.ukcpap.co.uk/downloads/dotnetfx_2.0_ENG.exe

Follow the installation instructions.

NOTE: TRENDset can only be installed with administrator rights.

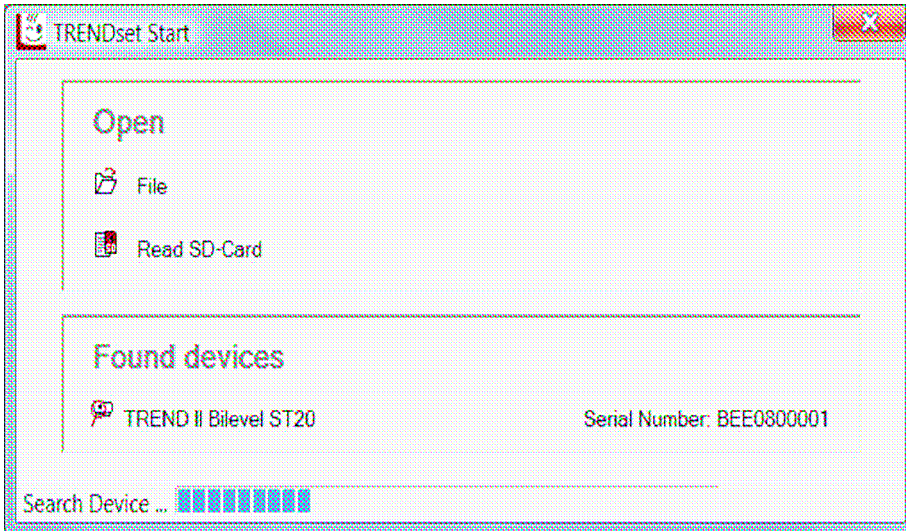
Connecting the Device with the Computer

1. Connect the 9pin D-Sub plug of the serial cable to the COM interface of your computer. If your computer or laptop does not have a COM interface an additional cable is required to convert the 9pin plug to USB.
2. Connect the RJ11 plug (2) to the device.
3. Connect the device to power supply.

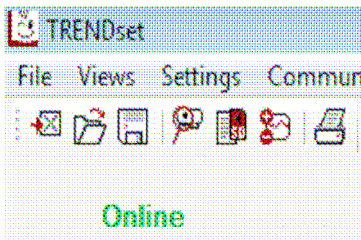
Starting TRENDset



When you start TRENDset, the “Intro Window” appears.



TRENDset searches automatically for connected devices.



All founded devices are listed. Select the desired device by mouse click. Afterwards starts the data import. This process will take at most 50 seconds. TRENDset changes to the status **Online**.

If no device has been detected under **Found devices** no devices will be displayed and TRENDset remains in the status **Offline**. All programming and analysis functions remain deactivated.

You can also open an existing file. Just click on **File**. Furthermore you can read-in data from the SD-card. Just click on **Read SD-Card**.

Search Device Manually

If no device has been detected under **Found devices**, you can use manual device search.

Select **Communication > Manual Device Search**.

1. Select the COM-Port to which the device is connected.
2. TRENDset searches for a connected device.
 - a. When a device is detected, the data import starts. This process will take at most 50 seconds.
 - b. If no device is detected, the message “No Connection to Therapy Device” appears. Confirm this with **OK**. Select another COM-Port and confirm again with **OK**. Repeat this procedure until TRENDset has found the device.

Menu Bar



The menu bar contains all menus and menu items needed to operate TRENDset.

Symbol Bar



Using the symbol bar, you can call up all of the program's most important functions.

Close file Read SD-card
Open file Parameter-Popup
Save file Print data
Search for device automatically
Read SD-card
Parameter-Popup
Print data

Function Bar



TRENDset is subdivided into 6 function areas:

- Patient Data
- Device Settings
- Therapy Calendar
- Data and Events
- Statistics
- Times and Counters

After the program starts, the function area for **Patient Data** is always opened.

If you select another function area, the display in the work area will change.

NOTE: The number of function areas and the display in the work area depend on the type of device.

◀ The active function area is highlighted in gray in the function bar.

Working with Files

Opening Files

Select **File > Open** or use the symbol bar.

The dialogue box **Open** will appear with the preset pathway **Own Files (Documents)/ TRENDset**. The folder **TRENDset** will be generated the first time the program is started and will be the standard folder for saving all files belonging to TRENDset. It can only open files with the extension **.csw** or **.csa**.

Before a new file is opened, TRENDset first checks whether or not all open data have been saved.

As soon as a file has been opened, TRENDset switches into the status **Offline**.

Close File

Select **File > Close** or use the symbol bar.

Closing causes all displayed data from the connected device or file to be lost. If changes have not already been sent to the device, you will be prompted to save the changes.

After closing, the status will change from **Online** to **Offline**.

Save Data

Select **File > Save** or use the symbol bar.

The files will be saved in the folder **Own Files (Documents)/TRENDset** with the extension **.csw**.

With command **Save as** you can save the open file under another name or in another directory.

Quit TRENDset

Select **File > Exit**.

Before quitting, TRENDset checks whether all data have been saved. If you have not already sent your changes to the device, you will be prompted to save.

Read Device Data

Select **Communication > Read Device Data**.

You will have the option of three sub-menus:

- Read Device Memory
- Read Device Parameters
- Read Patient Data (if supported)

Read Device Memory

Select **Communication > Read Device Data > Read Device Memory**.

The device memory consists, depending on device type, of a therapy memory and a compliance memory. The therapy memory contains all therapy data. In the compliance memory, only data on the use of the device are saved. You find the therapy data in the function areas **Therapy Calendar**, **Data and Events** as well as their statistical evaluation are found in **Statistics**. The use of the device will displayed in the **Therapy Calendar**.

Reading the Device Parameters

Select **Communication > Read Device Data > Read Device Paramaters**.

The device parameters are displayed in the function areas **Patient Data**, **Device Settings** as well as **Times and Counters**.

Reading Patient Data

Select **Communication > Read Device Data > Read Patient data**.

Patient data are imported and displayed in the function area **Patient data**.

Troubleshooting

While TRENDset searches for a device, the following system messages can appear:

System message	Cause
No Connection to Therapy Device.	A wrong COM-Port was selected.
The COM Port "x" is invalid or is used by another application.	The COM-Port is either unavailable or blocked by another application.
No connection to therapy device at the COM Port "x".	<ul style="list-style-type: none">• The device is not turned on.• The serial cable is not properly connected with the computer or the device.• The device is connected with another COM-Port.• No device is connected.